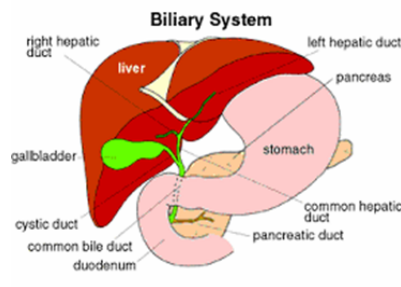


**ACCESSORY ORGANS OF THE DIGESTIVE SYSTEM**

**Liver**

- Synthesis of **bile** - emulsifies fats
- Two lobes
- Regulates body metabolism
- Catalase enzymes extract toxins from blood
- Excessive alcohol results in liver disease (cirrhosis)



Apr 13-11:50

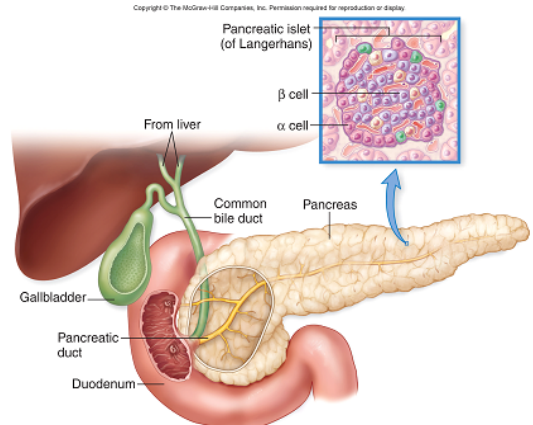
**Gallbladder**

- Muscular sac located in between liver lobes
- Stores the bile received from liver
- Sends bile through bile duct to duodenum
- Bile emulsifies (breaks down) fat and aids in lipid absorption
- Gallstones develop when too much water is absorbed from the bile leaving behind solids, blocking the bile duct (OUCH!!)

Apr 13-11:51

**Pancreas**

- Lies behind stomach
- About 15 cm long, leaf shaped
- Releases bicarbonate ions to neutralize chyme
- Secretes enzymes: lipase, carbohydrase, protease, trypsin, nuclease
- Pancreatic lipase = triglycerides --> fatty acids + glycerol; pH 8



Apr 13-11:51

Nov 11-7:27 PM